

zoom
playa

REAL ESTATE BROKER

CONNECT WITH THE REAL TULUM

www.ZoomPlaya.com



**SPACES OPEN UP IN THE MIDDLE
OF THE JUNGLE; THEY ARE OUR
VOICES THAT ARE HEARD,
TOGETHER**



PRIME LOCATION + ARCHITECTURE + AMENITIES + PROPERTY MANAGEMENT





DOWNTOWN



CENOTE SANTA CRUZ

LOCATED AT COBA AVENUE, THE MOST IMPORTANT ACCESS ROAD BETWEEN DOWNTOWN TULUM, THE HOTEL ZONE AND THE EXTRAORDINARY BEACHES. A STRATEGIC POINT FOR MEDIUM AND LONG STAY ACCOMMODATIONS, AS WELL AS BEING THE IDEAL PLACE FOR COMMERCIAL, HOTEL AND RESTAURANT INVESTMENTS.

-  2 MINS
-  MARKET
300 MTS 2 MINS
-  DOWNTOWN
1.3 KMS 5 MINS
-  BUS STATION
2.5 KMS 8 MINS
-  BEACH ZONE
3.5 KMS 9 MINS
-  ARCHAEOLOGICAL RUINS
3.5 KMS 9 MINS



REPRESENTATIVE IMAGE, SUBJECT TO CHANGE



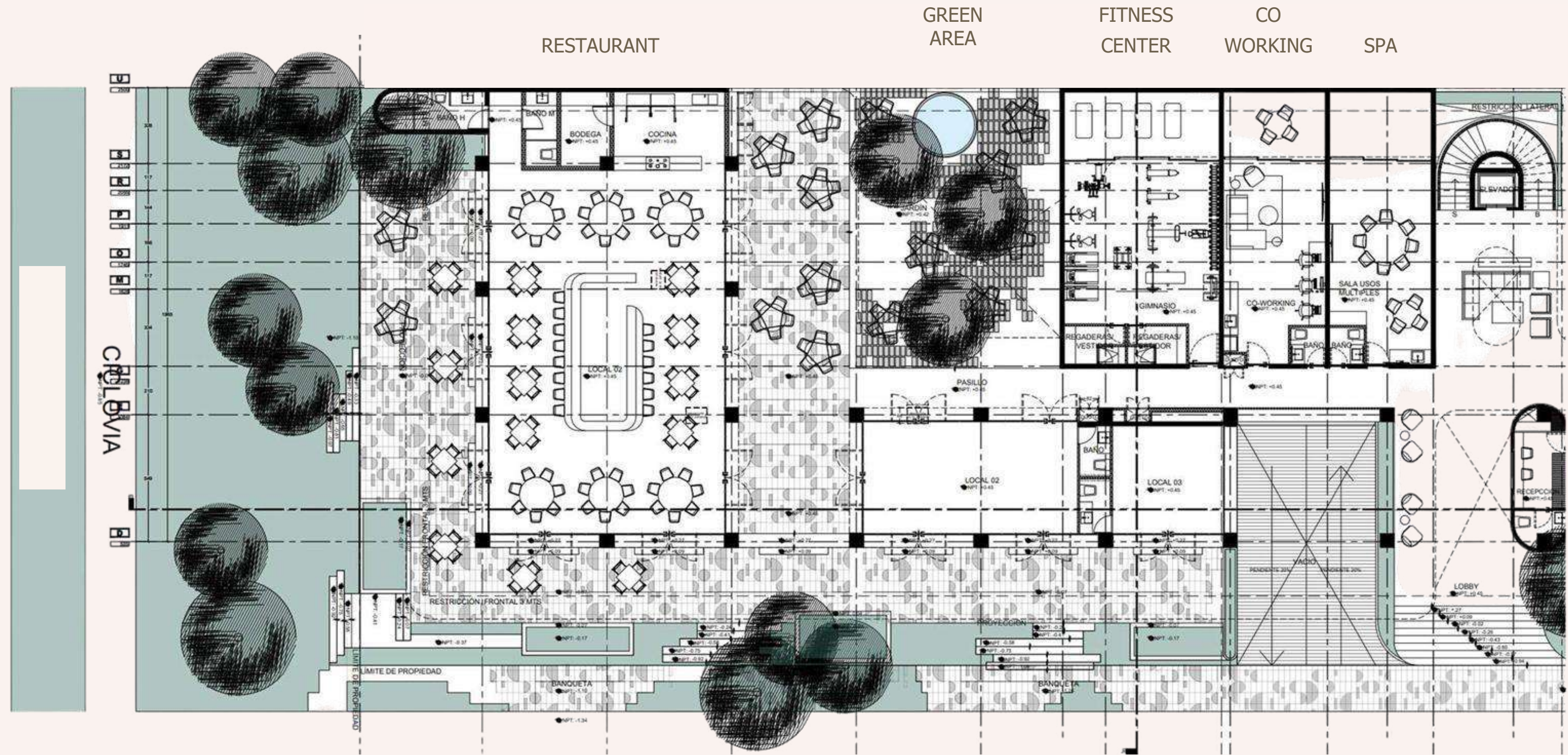
MASTER PLAN

IMAGEN REPRESENTATIVA, SUJETA A CAMBIOS



CAREFULLY DESIGNED SPACES WHERE THE JUNGLE AND THE CITY
GIVE LIFE TO THE REAL TULUM.

GROUND FLOOR & AMENIDADES




UNDERGROUND
PARKING

BIKES
& SCOOTERS

ICE
MACHINE

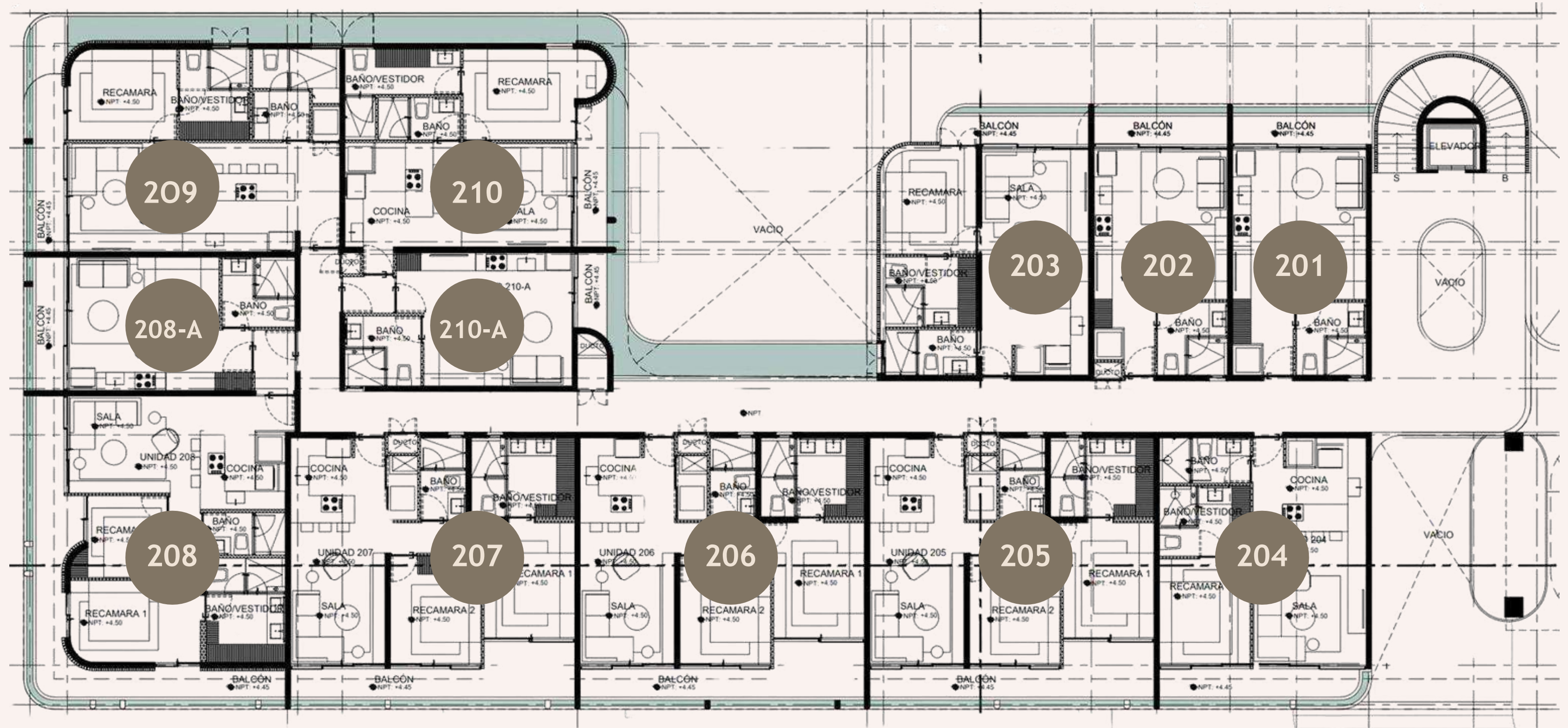
VENDING
MACHINE

An architectural rendering of a modern, multi-story building with a unique design. The building features prominent, rounded, cantilevered balconies on each floor, which are lush with greenery and plants. The facade is a light, neutral color. The ground floor has a series of arched openings, some of which are covered with large, light-colored umbrellas, suggesting an outdoor seating area or courtyard. The foreground shows a paved plaza with some people walking, and the background includes more greenery and a clear blue sky. A semi-transparent dark grey banner is overlaid on the upper right portion of the image, containing white text.

THE IDEAL INVESTMENT PROJECT,
WITH PERFECT LOCATION AND UNIQUE DESIGN TO CONNECT.



LEVEL 1



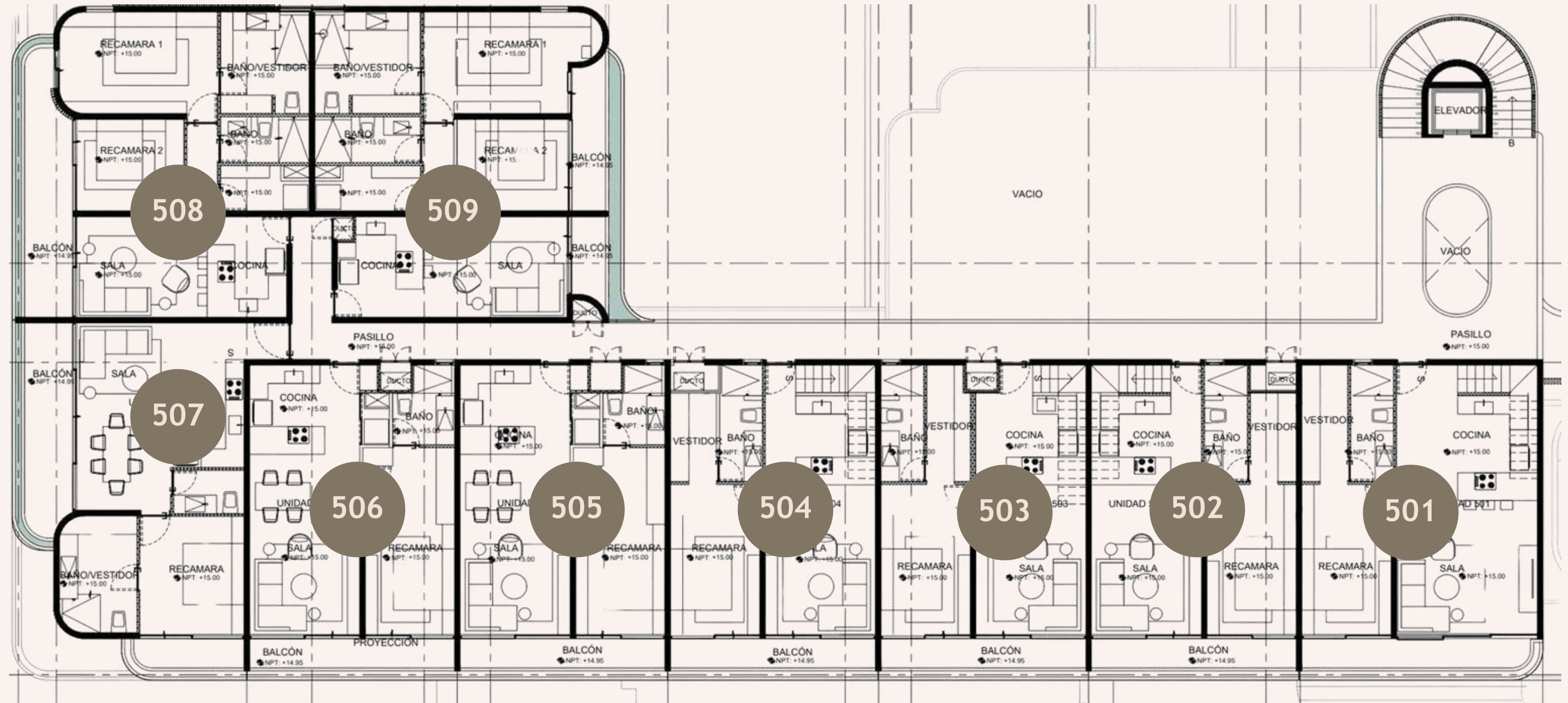
LEVEL 2



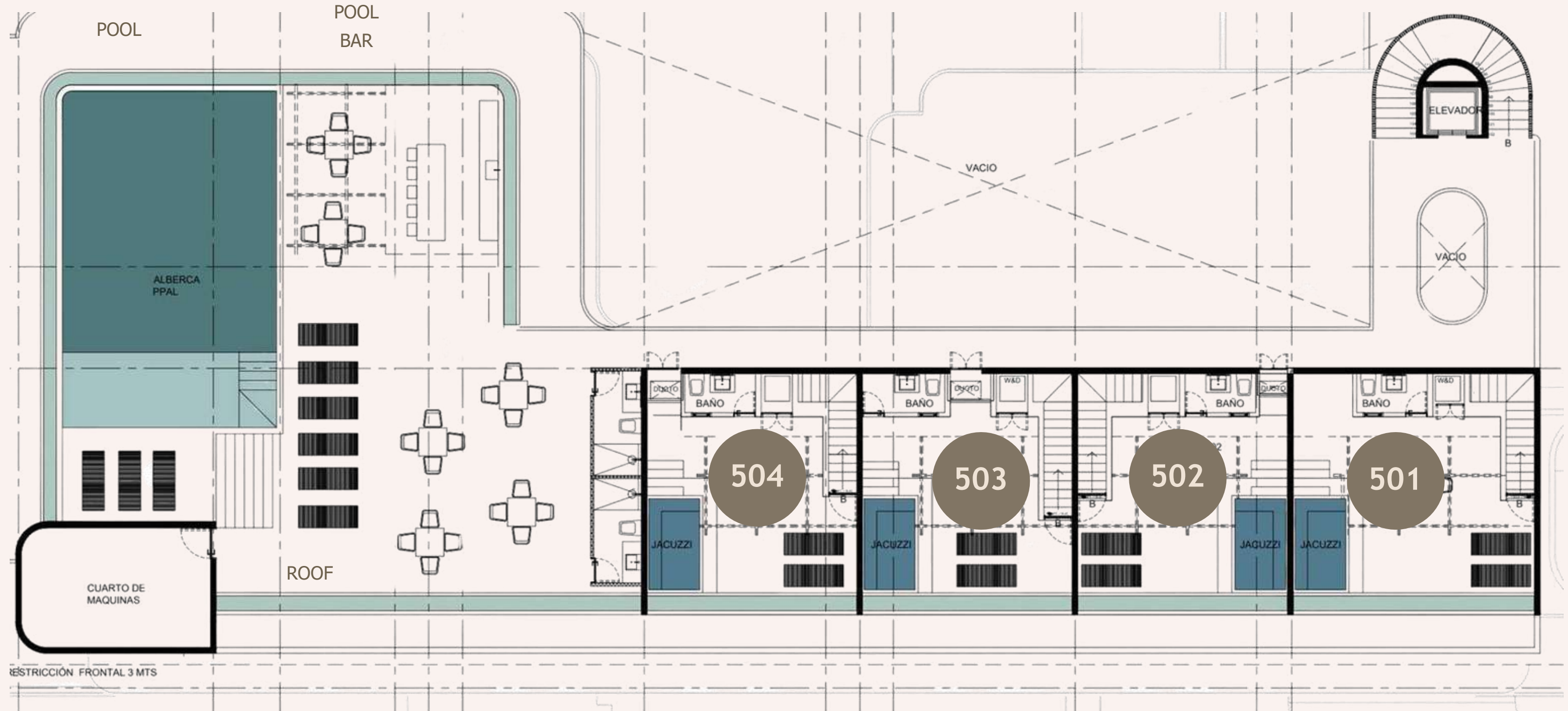
LEVEL 3



LEVEL 4



ROOF TOP & AMENITIES



UNIQUE CONDOS

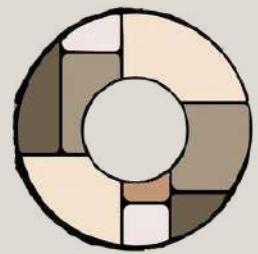
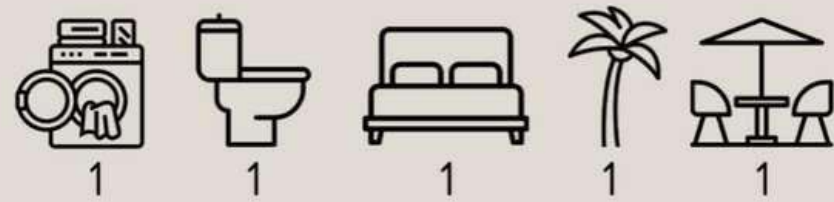


CONTEMPORARY DESIGN + QUALITY FINISHES + AMENITIES + LIFE STYLE

STUDIO

SIZE: 41 m2 - 41.8 m2

- 1 ENTRANCE
- 2 LAUNDRY CENTER
- 3 BATHROOM
- 4 KITCHEN
- 5 BEDROOM
- 6 LIVING ROOM
- 7 TERRACE / BALCONY



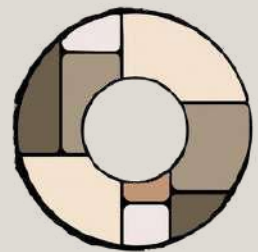
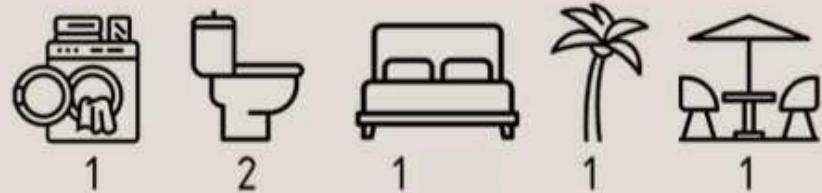


REPRESENTATIVE IMAGE, SUBJECT TO CHANGE

1 BEDROOM

SIZE: 61 m² - 83.6 m²

- 1 ENTRANCE
- 2 KITCHEN
- 3 LAUNDRY
- 4 BATHROOM
- 5 BATHROOM – DRESSING ROOM
- 6 MASTER BEDROOM
- 7 LIVINGROOM
- 8 TERRACE / BALCONY





REPRESENTATIVE IMAGE, SUBJECT TO CHANGE

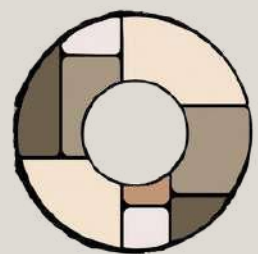
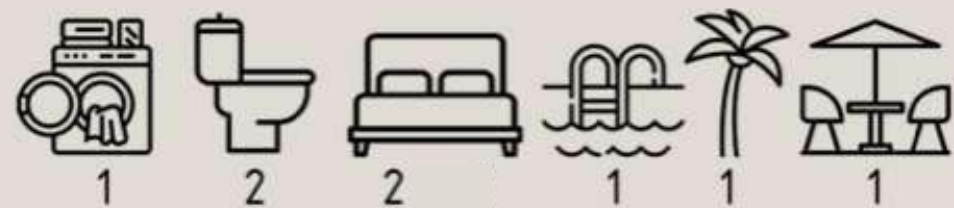


REPRESENTATIVE IMAGE, SUBJECT TO CHANGE

2 BEDROOMS

SIZE: 86.1 m²

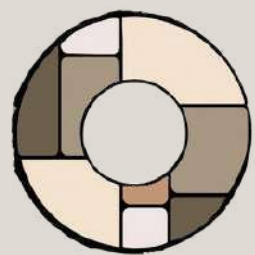
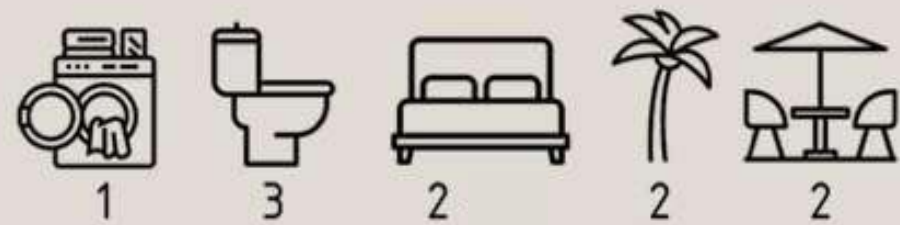
- 1 ENTRANCE
- 2 KITCHEN
- 3 LAUNDRY CENTER
- 4 LIVING ROOM
- 5 BATHROOM
- 6 BEDROOM 1 – MASTER
- 7 BATHROOM / DRESSING ROOM
- 8 BEDROOM 2
- 9 TERRACE / BALCONY
- 10 SPLASH POOL



2 BEDROOMS WITH LOCK OFF

SIZE: 104.5 m² - 114.3 m²

- 1 ENTRANCE
- 2 KITCHEN
- 3 LIVINGROOM
- 4 BATHROOM
- 5 BEDROOM LOCK OFF
- 6 MASTER BEDROOM
- 7 BATHROOM / DRESSING ROOM
- 8 LAUNDRY
- 9 TERRACE / BALCONY
- 10 STUDIO



LOCK OFF



REPRESENTATIVE IMAGE, SUBJECT TO CHANGE

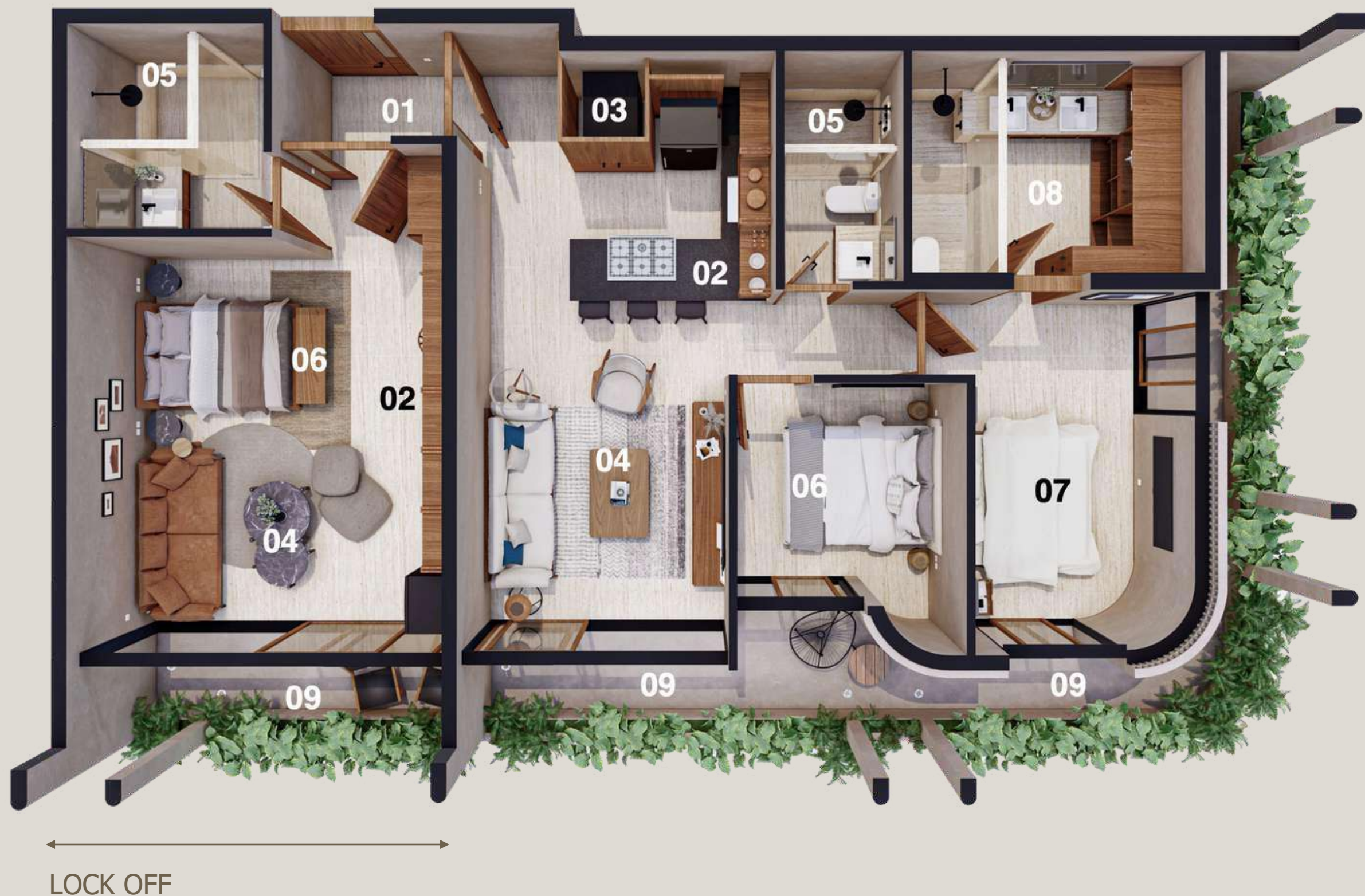
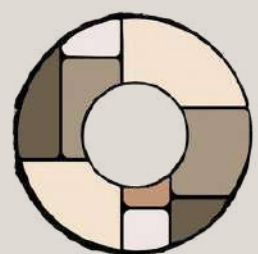
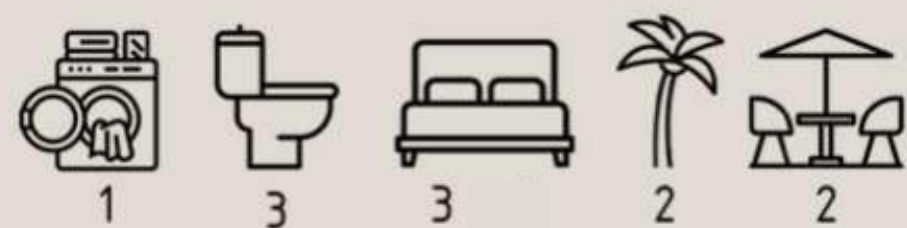


REPRESENTATIVE IMAGE, SUBJECT TO CHANGE

3 BEDROOM WITH LOCK OFF

SIZE: 133.1 m²

- 1 ENTRANCE (MAIN & LOCK OFF)
- 2 COCINA (MAIN & LOCK OFF)
- 3 LAUNDRY
- 4 LIVINGROOM
- 5 BATHROOM
- 6 BEDROOM LOCK OFF
- 7 MASTER BEDROOM
- 8 BATHROOM / DRESSING ROOM
- 9 TERRACE / BALCONY



A rooftop terrace with a wooden pergola structure. The terrace is furnished with a large, light-colored lounge chair on the left, a hot tub on the right, and a patterned rug in the center. There are several decorative items, including a wicker basket with a candle, a small statue, and a tray with lit candles. The background shows a cityscape at sunset, with a prominent cactus and other vegetation. The sky is filled with soft, golden light from the setting sun.

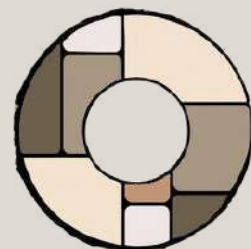
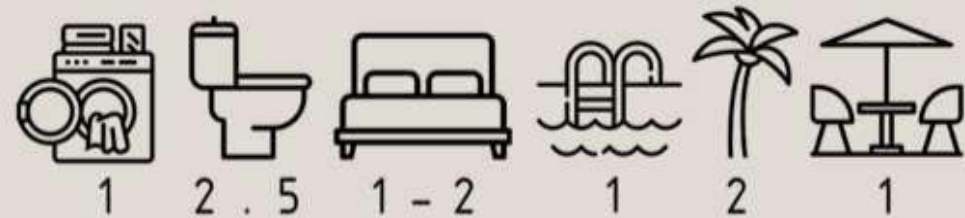
ENJOY THE VIEW FROM YOUR ROOF TOP

ADMIRE THE CITY FROM A UNIQUE PERSPECTIVE, IN THE BEST SPOT OF TULUM.

1 BEDROOM WITH ROOF TOP

SIZE: 122.6 m2 - 144.6 m2

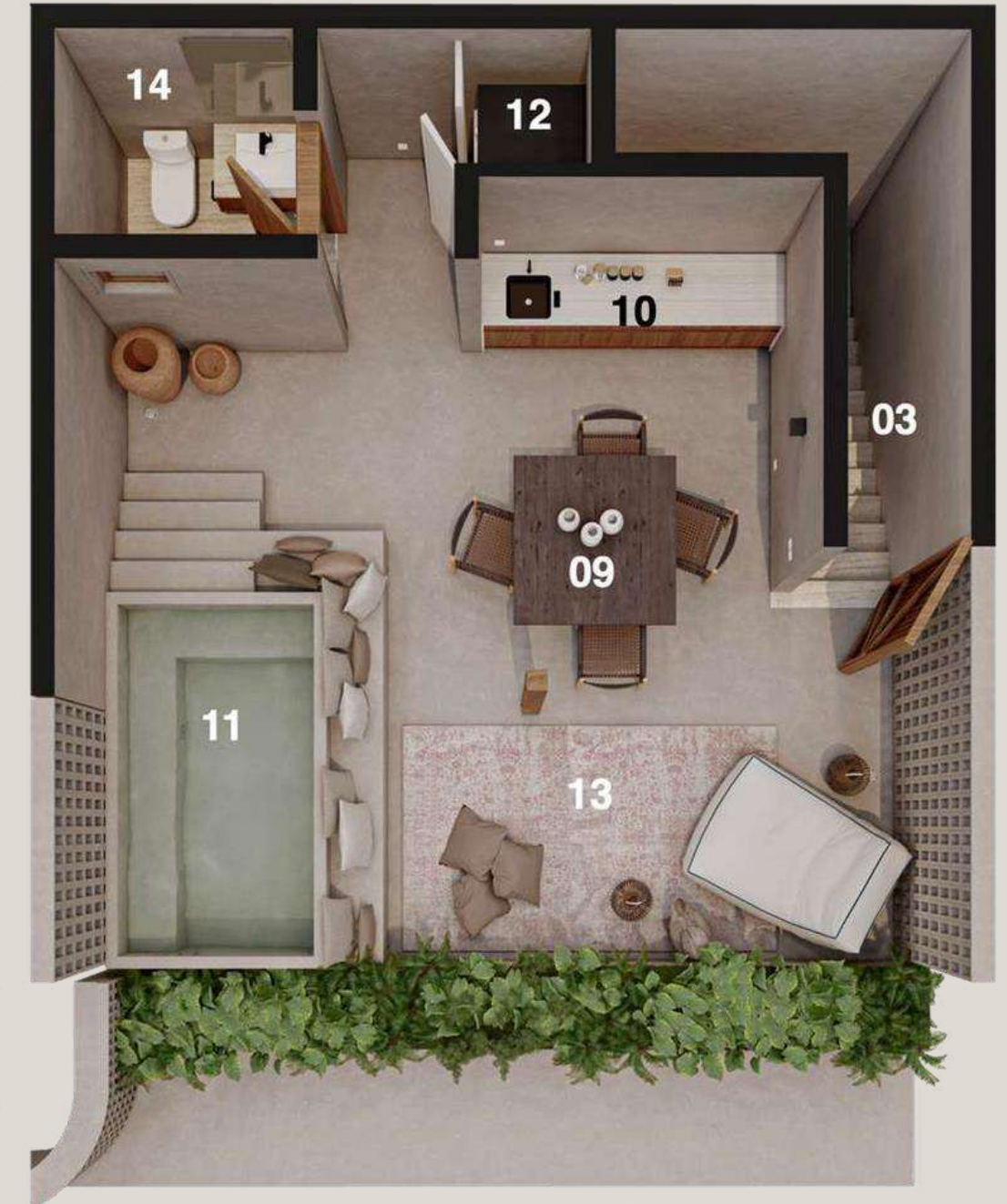
- | | |
|----------------------------|-----------------|
| 1 ENTRANCE | 9 ROOF TOP |
| 2 KITCHEN | 10 BAR |
| 3 STAIRS | 11 SPLASH POOL |
| 4 LIVINGROOM | 12 LAUNDRY |
| 5 BATHROOM | 13 TANNING SPOT |
| 6 MASTER BEDROOM | 14 WC - ROOF |
| 7 BATHROOM / DRESSING ROOM | |
| 8 TERRACE / BALCONY | |



GROUND FLOOR

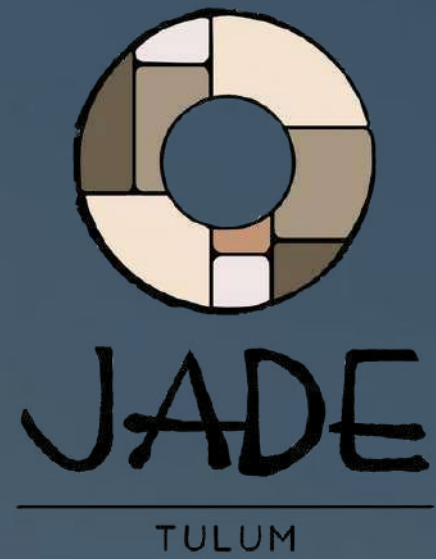


ROOFTOP





**LIVE TULUM IN A PRIVILEGED
AND SOPHISTICATED WAY.**



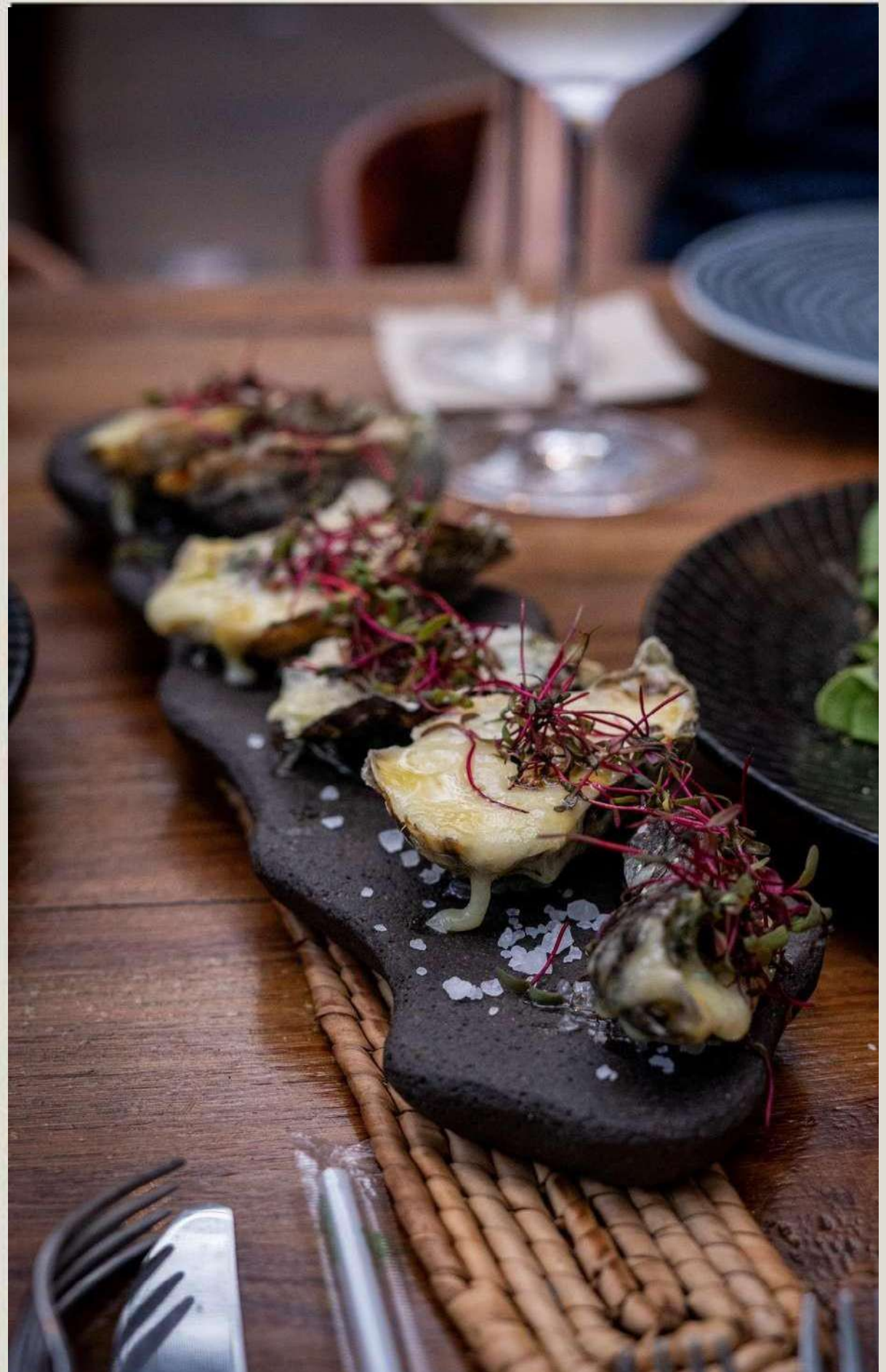
IDEAL FOR COMMERCIAL ACTIVITIES

**IN THE HEART OF TULUM, BETWEEN DOWNTOWN AND
THE BEACH**

**zoom
playa**
REAL ESTATE BROKER

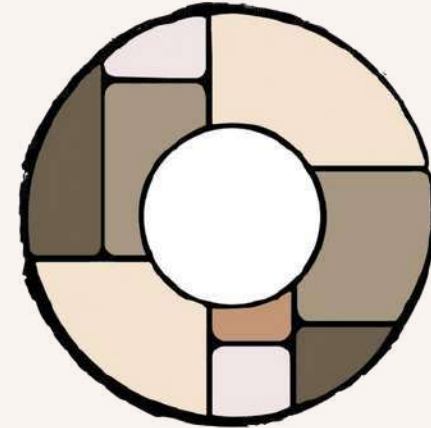


EATERY + SHOPPING + NIGHT LIFE + LUXURY LIVING



CONNECT WITH THE REAL TULUM

zoomplaya
REAL ESTATE BROKER



JADE

TULUM

Mike Sabet

+52 55 1444 9030

mike@zoomplaya.com